

ADS-WESTERN 2025

NEWSLETTER

JANUARY-FEBRUARY



Health care service providers from Khaunga and ACK Namasoli Health Facilities undergoing training in Emergency Obstetric and Newborn Care (EmONC) at the ACK guest house, Mumias.

ADSW IN NUMBERS 2025

76.3 ACRES

of Kakamega forest rehabilitated

14%

reduction in cases of malnutrition in Kakamega Busia & Bungoma

1754

Youth reached with KAP on SRH and financial literacy in Kakamega & Bungoma Counties

9

Solar suitcases installed in 8 health facilities

Through the implementation of the SMILES Project, the utilization of maternal, neonatal, and child health (MNCH) services is expected to improve among women of reproductive age and children under five across 30 targeted communities in Kakamega County.





We exist to build partnership with communities and empower them to address their needs for sustainable development.

Our Strategic Objectives

 <p>To enhance communities' adaptation and resilience to climate change indications.</p>	 <p>To improve food and nutrition security of communities in Western Region.</p>	 <p>To improve healthcare and social protection outcomes for citizens in targeted counties.</p>	 <p>To advocate for good governance at the Lake Region Economic Block (LREB) level, county level and local institutions for improved service delivery.</p>	 <p>Enhance effectiveness and efficiency of ADSW as interagency development institution in Western Region</p>
---	---	--	--	--



Championing Maternal Health in Western Kenya

Maternal and child health is a cornerstone of sustainable community development. When mothers and children thrive, entire communities benefit, from better education outcomes to more robust economic opportunities.

In Western Kenya, specifically in **Namasoli and Khaunga (Kakamega County)**, the SMILES project is making a significant impact by strengthening maternal health through local engagement and support. This initiative focuses on improving the health and well-being of women, newborns, and children in 30 communities, with a clear set of goals, targets, and objectives.

By centering on maternal, newborn, and child health (MNCH), the project aims to address critical gaps in healthcare access, quality, and education. These efforts directly affect both short-term and long-term health outcomes, ensuring that families have the knowledge and resources to lead healthier lives



Eva Chebet- Project Coordinator (SMILES)



Nurses, and health care service providers from Khaunga and ACK Namasoli Health Facilities undergoing training in Emergency Obstetric and Newborn Care (EmONC) at the ACK Diocese in Mumias, Kakamega County.

Who Is Being Reached?

The project sets a target of reaching 2,400 mothers and 510 children across 30 communities. This focus on both mothers and children acknowledges the interlinked nature of maternal and child health when a mother has consistent, high-quality healthcare during and after pregnancy, her child is far more likely to thrive.

● Why It Matters

Investing in maternal, newborn, and child health is one of the most effective ways to break the cycle of poverty. Healthier mothers are more able to engage in economic activities and provide better care for their children. When newborns and young children have strong starts in life, they are more likely to succeed in school and become productive members of their communities. Additionally, by focusing on local engagement, SMILES ensures that the communities themselves drive change. This leads to more sustainable outcomes, as local health workers and residents take ownership of the interventions and integrate them into daily life.

● Looking Ahead

As SMILES continues to implement its strategy, success will be measured not only by the number of mothers and children served but also by the quality of care and the community's active participation. Through strengthened health systems, better-equipped facilities, and an empowered population, the project paves the way for a healthier future in Kakamega County.

RURAL KENYA FINANCIAL INCLUSION FACILITY (RK-FINFA)



THE RK-FINFA PROJECT KICKS OFF

Access to formal finance is still a major challenge in rural Western Kenya. This has hindered development for both small businesses and agricultural farmers. However, the Rural Kenya Financial Inclusion Facility (RK-FINFA) is rewriting the playbook. By equipping farmers with digital tools, financial literacy, and risk management skills, this six-year project is not only bridging financing gaps but also connecting farmers to lucrative markets; transforming challenges into opportunities for more than 3,080 target farmers and 750 rural agri-MSMEs, especially women- and youth-led enterprises accessing business development services.

- **25,000 smallholder farmers & 750 agro MSMEs to be reached**

ADS Western, in partnership with CORDAID launched the RK FINFA project with an inception meeting that ran from 15th to 17th January 2025. This project is funded by IFAD and the Government of Kenya and aims at improving agricultural financing for small holder farmers in. **Kakamega, Siaya, Busia, Trans Nzoia, Nandi, and Kisii** counties.

RK-FINFA will equip farmers with financial literacy, risk management skills, and digital tools to enhance savings and investment opportunities. The project also connects farmers to markets through a digital platform and hosts discussions to strengthen agricultural value chains.

These efforts will help bridge financing gaps and create better market access for rural farming communities. We look forward to reaching 25,000 smallholder farmers and 750 agro MSMEs who are trained in financial literacy and/or in the use of financial products and services.

Nurturing the Kakamega Rain Forest Through Sustainable Management

Kakamega Rain Forest stands as a vital ecological gem in Kenya; renowned for its biodiversity, cultural significance, and crucial role in supporting local livelihoods. The new initiative focused on **“Promotion and adoption of sustainable forest management ecosystem across the landscape of Kakamega Rain Forest”** is a beacon of hope, bringing together environmental conservation and community well-being. This program targets 300 farmers and aims to create a sustainable blueprint for managing forest resources while uplifting the socio-economic conditions of local communities.

The Goal



“ Enhance environmental sustainability, ecosystem resilience, and socio-economic well-being of communities within Kakamega Rainforest ecosystem through sustainable land and forest management.

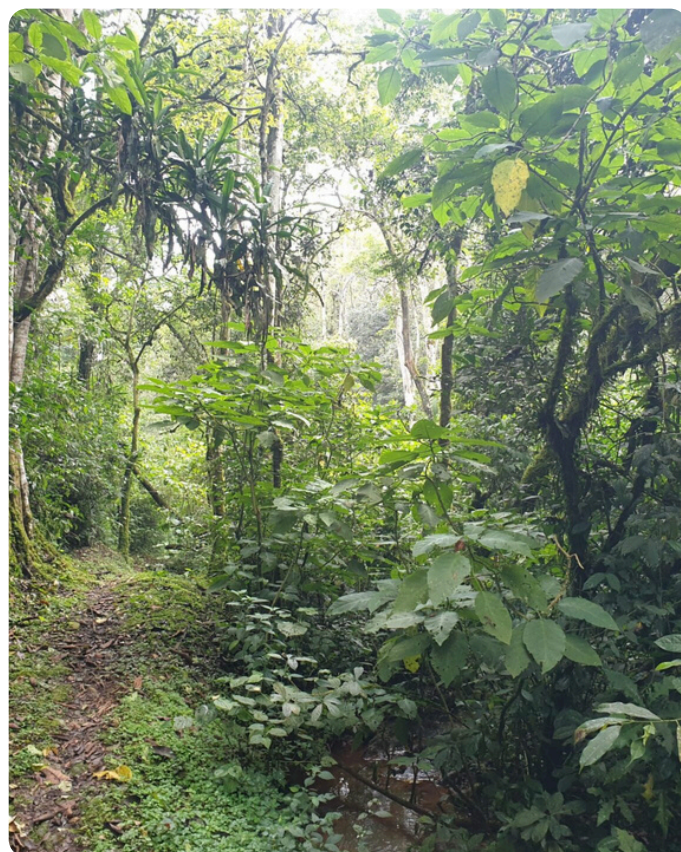
This overarching vision addresses two critical dimensions: preserving the forest’s ecological integrity and improving the quality of life for those who rely on its resources.

● Why It Matters

With climate change bringing erratic rainfall patterns, droughts, and floods, rural communities in Western Kenya are particularly vulnerable.



Photo: Section of Kakamega Rain Forest



Transforming Rural Livelihoods Amid Climate Change

Climate change is no longer a distant threat it's a present reality, impacting smallholder farmers across the globe. In Western Kenya, rural communities in Kakamega, Busia, Bungoma, and Vihiga Counties are on the frontlines of this challenge.

With support from BROT, the **“Improved Livelihoods in Light of Climate Change”** initiative is tackling these issues head-on. Targeting 4,200 farmers, the project seeks to build resilience, protect the environment, and ultimately reduce poverty and food insecurity.

The Goal

The project contributes to environmental protection and to reducing poverty and food insecurity in rural communities in Western Kenya. nability, ecosystem.

This dual focus acknowledges that ecological well-being and community prosperity are deeply intertwined. When farmers adopt sustainable practices, not only does the local environment benefit, but their families and communities also gain greater food security and economic stability

Why It Matters

Food insecurity and poverty can escalate rapidly if farmers lack the tools, knowledge, and resources to adapt. Projects like **“Improved Livelihoods in Light of Climate Change”** address these issues by equipping farmers to become resilient and innovative. The outcomes—better livelihoods, responsible resource management, and empowered communities—translate into a stronger, more stable future for everyone involved.

By setting clear outcomes and a bold, inclusive goal, the BROT-funded initiative in Kakamega, Busia, Bungoma, and Vihiga Counties is paving the way for transformative change.

From improved farming practices to greater community engagement, the ripple effects of this project promise to enhance both environmental health and social well-being.

As farmers adopt sustainable approaches and disadvantaged groups gain a platform to advocate for their interests, the region moves closer to a future where poverty and food insecurity are not just managed but truly overcome.



Mr. Joost, Mr. Eike, and Ben From BROT at ADS Western Office. Mr Sam Koile Taking them Through our project profile



Mr. Joost, Mr. Eike, and Ben From BROT pose for a photo with ADSW Management outside our office during a courtesy visit



Mr Nelson, explaining to ADSW-BROT team how the project has been of IMPact to him and the community

WHAT'S HAPPENING?

COUNTY EMBRACES NEW FOOD SECURITY INITIATIVES FROM ADS-WESTERN

ADS WESTERN hosted the County Agricultural Sector Steering Committee (CASSCOM) secretariat, to brief them of our programmes that are being implemented in Kakamega County.

The focus of the session was on introducing two new food security projects slated for implementation within the county.



The focus of the session was on introducing two new food security projects slated for implementation within the county.

The meeting saw the participation of various directors, including Mr. Titus Omengo from the Agriculture Department, who led the group of county officials. Representing ADS-Western, Mr. Stephen Amusala, CEO, along with Ms. Isabel Kasaya, Head of Programs & Partnerships, spearheaded the presentations. Additional county officials were also present to discuss and support these promising initiatives.

STAKEHOLDER ENGAGEMENT FOR SUSTAINABLE FOREST MANAGEMENT IN KAKAMEGA



ADS Western had a fruitful engagement on 25th February with the forester in charge of Kakamega Forest at the KFS station in Shinyalu, Mr. Julius Nandwa.

We introduced him to the Promotion and Adoption of the SLM/SFM Project, which targets restoring 20 hectares of Kakamega Forest.

He viewed it as a good initiative and promised to offer full support by helping us identify stakeholders implementing such activities in the area, linking us to CFAs, and assisting with the rehabilitation of the forest.

Together, we also agreed to conduct a stakeholder inception meeting, where additional KFS technical staff will participate and provide further input and support.

ADS Western conducted a four-day training on Emergency Obstetric and Newborn Care (EmONC) at ACK Diocese in Mumias, Kakamega County. The training, which concluded today, was supported by the Kakamega County Ministry of Health. Twenty midwives, nurses, and community health providers from Khaunga and ACK Namasoli Health Facilities participated. The program aimed to strengthen the healthcare staff's ability to manage maternal and neonatal emergencies. Following the training, participants will train other community health providers in 30 villages across the county. In attendance were members of the County Health Management Team, Sub-County Health Management Teams, Facility In-Charges, and frontline healthcare providers.



STRENGTHENING MATERNAL AND NEONATAL RESPONSE



WHAT'S HAPPENING?

ADS-WESTERN UNVEILS INNOVATIVE PROJECTS AT BUNGOMA CASSCOM MEETING



ADS-Western attended the Bungoma CASSCOM meeting at Mabanga ATC, where Eng. Kibunguchy, the CECM of Agriculture for Bungoma County, along with directors, officers from various ministries, and other stakeholders in the steering committee, were present.

Led by Isabel Kasaya, ADS-Western took the lead in introducing two key projects to the committee: the BROT-ILILCC Project (Improved Livelihood in Light of Climate Change) and the RK FINFA Project (Rural Kenya Financial Inclusion Facility).



ADS-WESTERN CHAMPIONS SUSTAINABLE FARMING AND CLIMATE RESILIENCE

Agroecology plays a key role in sustainable agriculture by integrating ecological principles into farming.



It promotes biodiversity, soil health, and responsible resource management, thereby improving food production while minimizing environmental impact.

On 21st Feb, we hosted Mr. Joost, Mr. Eike, and Ben-BROT advisors on agroecology and climate change for an interactive session at our offices. Our CEO and programme leads provided an overview of our programmes, implementation strategies, and ADS-Western future plans.

As part of the visit, we conducted a field visit to a BROT-funded project in Busia, where the team observed how Mr. Nelson and his group have successfully adopted various sustainable farming technologies. One notable innovation is solar-powered irrigation, which has enabled him to produce high-quality vegetables and secure better market prices.

ADS-Western is currently partnering with Bungoma County on a climate adaptation and resilience project funded by Christian Aid.



WHAT'S HAPPENING?

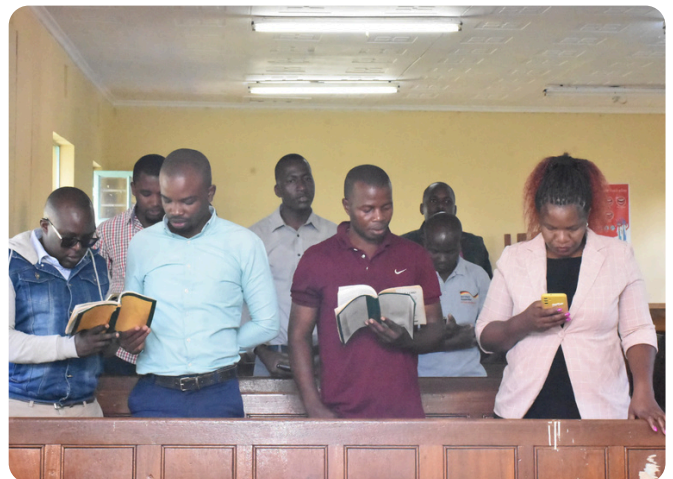
INSPIRING SPIRITUAL RENEWAL



We had the honor of hosting Bishop Isaiah Obuya for the ADSW Monthly Devotion on February. He reminded us of the importance of regularly examining our spiritual lives, rejecting sin, staying committed to our Christian faith, and offering pastoral care.

After the devotion, we spent some quiet time in personal prayer and thanksgiving, reflecting on our journey so far. The CEO encouraged us to support each other's growth, deepen our understanding of our organization, and focus on spiritual nourishment.

We also received updates from various department heads, reinforcing our roles and responsibilities.



BOARD OF DIRECTORS TRAINING

The ADSW Board of Directors (BOD) underwent a two-day training and induction workshop held at Divine Homes Resort in Kisumu in February, 11th to 13th.

The training was facilitated by our partner, World Renew Kenya (WRK). The objective of the training was to induct board members into their roles, deepen their understanding on governance issues and for them to bond.

The training was fruitful and board members attested to its relevance in enhancing their effectiveness in their governance role.





ADS - WESTERN REGION
Wholesome & dignified life



www.adswesternregion.org

